

Work is ongoing at Whisper Mountain

Ministry Needs February 2017

- ❖ **Audio/Visual Equipment**
 - [Canon Mark 5D iii Camera Telephoto EF 70-200 Zoom Lens](#)
 - Wireless Microphones Set + Handhelds + Headsets
 - New Apple iPad Pro 12"
- ❖ **Campus Needs**
 - Refrigerator for trailer home (Max Opening size 37 x 68)
 - Stack set Washer/Dryers Heavy Duty Electric for campus laundry
- ❖ **Food Service & Concessions Commercial Equipment:**
 - **Volunteers that enjoy hard work + helping in the kitchen!**
 - (2) 6 Qt Ice Cream Freezers (auto + manual crank)
- ❖ **Garden Needs: We grow our own fresh vegetables!**
 - **Volunteers that enjoy gardening maintenance!**
 - Rain Barrels + [Drip Tape Irrigation Kit](#)
 - [Hoss Single Wheel Hoe](#) \$200
 - Weed block Rolls + Mulch
 - Fruit Plants: Blueberry/Blackberry/Raspberry, etc.
 - Decorative Plants: Hydrangeas; boxwoods, etc
 - Hardwood Trees (2" trunk minimum)
 - Young Trees: crepe myrtle, sugar maple, oak, blue spruce; peach and apple
- ❖ **Vehicles – New or Gently-Owned**
 - 4 x 4 Kawasaki Mule Utility Vehicles
 - Truck - 4 wheel drive
 - Gasoline Gift Cards (Shell, Crown, Wal-Mart)
- ❖ **Grounds & Maintenance**
 - ACE Hardware, Lowes, Home Depot Gift Cards
 - Grass Seed/Fertilizers/Weed Killer
 - Work Gloves for work teams – all sizes
- ❖ **First Aid Supplies**
 - Digital Thermometer
 - Wrist Blood Pressure Machine
 - Wound clean spray, Isopropyl Alcohol, Hydrogen Peroxide, Antibiotic ointments, Butterfly Closure Bandages, Band-Aids in variety of sizes and types; Silk wound tape, etc.
 - Benadryl Liquid & Tablets
 - Pain Relief: Aleve, Ibuprofen, Vanquish
 - Throat drops; Dayquil Non-drowsy Capsules
 - Bee Sting Relief; Poison Ivy/Oak Relief
 - Gold Bond Itch Cream & Lotion
 - Antacids; Pepto-Bismol Tablets
- ❖ **General Items**
 - Amazon Gift Cards
 - Lighters - Wind resistant
 - Flashlights & Headlamps
 - Batteries - AAA, AA, C & D
 - Tiki torch lights & Fluid w citronella for bugs
 - Wasp & Hornet Spray
 - Bug Spray for Gnats & Chiggers
 - Suntan Screen & Lotions
 - Wet Ones Wipes
- ❖ **Office Needs**
 - US Postal Forever Letter Postage Stamps
 - 1,000+ (3 x 5) Colored Note Cards
 - New Apple MacBook Pro 13"
 - Fellow's Crosscut Shredder
 - Sharpies - Medium Assorted Colors
 - Colored Copy Paper - Variety of Bright & Light
 - Card Stock Paper - White
 - 1/3 cut tab file folders

- ❖ **Paintball/Archery Field**
 - Genesis Archery Aluminum Arrows
 - Bazooka Ball Attachments (Call Marty for more Info)
 - Disinfectant Wipes for cleaning equipment
- ❖ **Cleaning & Janitorial Supplies**
 - Laundry – HE Detergent
 - Laundry Prewash Spray
 - Grease Lightening Cleaner
 - Simple Green Cleaner
 - 409 Spray Refill
 - Trash Bags: 44 Gallon/13 Gallon/3 gallon

T-E-A-M Opportunities!

God has provided the Vision and is using His team to further His ministry. Now is your chance to become part of what God is doing at Whisper Mountain Camp. **JOIN THE TEAM! Sign up online, call us, or email us (info@whispermountain.org) to get started!**

E-NEWS TEAM - Keep up with the latest WM happenings, pictures, encouragement and events delivered directly to your email box! Text the word WHISPERMTN to 22828 to sign up!

PRAYER WARRIOR TEAM - Empowering kingdom growth!

We invite you to join our prayer force entering the throne room on behalf of the teens, their leaders, our staff and the ministry overall. We honestly couldn't do this without the faithfulness of our prayer warriors lifting this ministry up in this way.

ADOPT A SUMMER STAFF TEAM - Are You An Encourager?

Our summer staff is a unique group of college age students that work alongside of us - not for great pay - but because of their passion of wanting to make a difference in the lives of others! It's hard work and during the summer they need encouragement.

We are seeking individuals or small groups willing to take on the fun job of "adopting" one of our summer staff for 10 weeks! Please know it will take you some weekly effort to communicate with them by way of cards, special treats, or encouraging texts. **Email for more info cassi@whispermountain.org.**

TEAM 10 - Give a little and Impact many lives for eternity!

It's amazing what can be done when many team up and give just a little! Your commitment to give \$10 or more each month can have a big impact to help grow and expand the vision of the ministry!

May God bless you in your prayerful consideration of teaming up with Whisper Mountain and helping us Proclaim Him!

Work is ongoing at Whisper Mountain

Current Projects

For the past 10 years God's Vision for this ministry has been taking place for Whisper Mountain. Our growth continues to experience "growing pains" of facilities and full time staff needs. The need is evident that growth is necessary to make this ministry self-sustaining...but growth means we need more beds, more usable space for groups and more fulltime staff! Join us in Praying for God's People and His Provisions to make this possible in His perfect timing!

NEW SPRING PROJECT To help with our immediate growing pains we will enclose existing pavilion to create a Worship/Meeting Building. The materials list is being finalized for this project. We are looking for Spring work teams to help complete this before summer. **If you can help with materials or labor please contact us!**

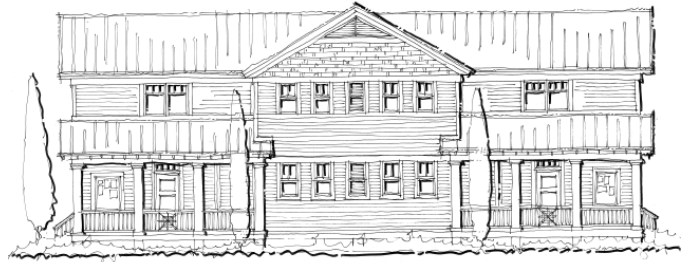


\$135 CONCRETE "YARD SALE"

To help prevent erosion areas and improve property, consider being a part of the **\$135 Yard Sale** to add concrete sidewalks, slabs, roadways and possible RV spaces for volunteers who bring their own housing. Concrete materials are \$135 per yard, plus volunteer labor for form up, to place concrete and to finish are needed before our Summer Season beginning in May. **If you have experience with flatwork concrete and want to help with some sweat equity...give us a call!**



WHISPER MOUNTAIN MINISTRIES



FRONT ELEVATION

Projects On The Drawing Board

- ✓ WORSHIP BUILDING with offices, camp store and coffee shop with a lower level of added beds.
- ✓ CAMPER LODGE with more sleeping space, bathrooms and added Small Group Meeting Space
- ✓ OFFICE CONVERSION where our existing office will be remodeled into a new Full Time Staff House for God's future additional fulltime missionary!